

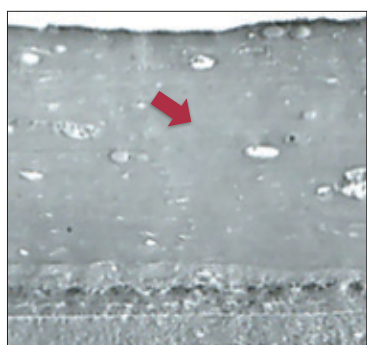
Try it. Like it. Recommend it.

What makes Norwegian Formula® Hand Cream so effective?

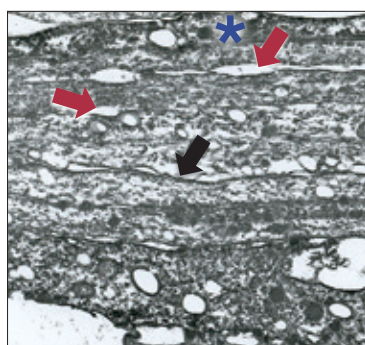
Formulated with 40% glycerin, just a pea-sized amount works deep within the stratum corneum. It creates a glycerin reservoir that dramatically increases skin's moisture content and decreases transepidermal water loss.¹

For extremely dry, chapped skin exacerbated by frequent handwashing

Hydrates and restores moisture barrier function in compromised skin



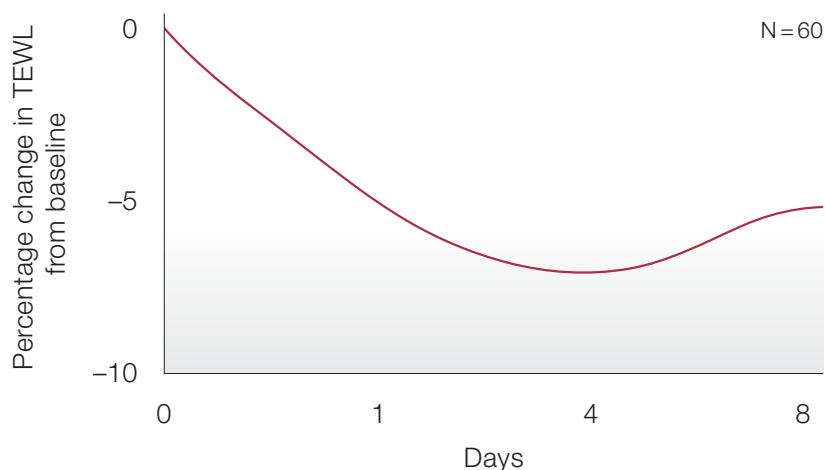
UNTREATED SKIN



TREATED SKIN

- * **INCREASED SIZE OF STRATUM CORNEUM** of living skin treated with Norwegian Formula® Hand Cream, compared to untreated skin
- ➔ Spaces between cells filled by glycerin
- ➔ Intercellular lipid bilayer remains intact

Decreases transepidermal water loss for more than 7 days after treatment¹



Non-comedogenic and fragrance-free, ideal for extremely dry, rough skin that requires intense moisturization.

